

# MAJOR KALSHI CLASSES

PVT. LTD.

“A way to get commissioned”

## NDA/NA MOCK TEST

### GENERAL ABILITY TEST

#### TEST BOOKLET

Time Allowed : *Two Hours and Thirty Minutes*

Maximum Marks : **600**

#### INSTRUCTIONS

1. IMMEDIATELY AFTER THE COMMENCEMENT OF THE EXAMINATION, YOU SHOULD CHECK THAT THIS TEST BOOKLET **DOES NOT** HAVE ANY UNPRINTED OR TORN OR MISSING PAGES OR ITEMS, ETC. IF SO, GET IT REPLACED BY A COMPLETE TEST BOOKLET.
2. **Please note that it is the candidate's responsibility to encode and fill in the Roll Number and Test Booklet Series A, B, C or D carefully and without any omission or discrepancy at the appropriate places in the OMR Answer Sheet. Any omission/discrepancy will render the Answer Sheet liable for rejection.**
3. You have to enter your Roll Number on the Test Booklet in the Box provided alongside. **DO NOT** write *anything else* on the Test Booklet.
4. This Test Booklet contains **150** items (questions) in two parts: **PART-A** and **PART-B**. **PART-B** is printed both in **Hindi** and **English**. Each item comprises four responses (answers). You will select the response which you want to mark on the Answer Sheet. In case you feel that there is more than one correct response, mark the response which you consider the best. In any case, choose **ONLY ONE** response for each item.
5. You have to mark all your responses **ONLY** on the separate Answer Sheet provided. See directions in the Answer Sheet.
6. **All** items carry equal marks.
7. Before you proceed to mark in the Answer Sheet the response to various items in the Test Booklet, you have to fill in some particulars in the Answer Sheet as per instructions sent to you with your Admission Certificate.
8. After you have completed filling in all your responses on the Answer Sheet and the examination has concluded, you should hand over to the invigilator **only the Answer Sheet**. You are permitted to take away with you the Test Booklet.
9. Sheets for rough work are appended in the Test Booklet at the end.
10. **Penalty for wrong answers :**  
**THERE WILL BE PENALTY FOR WRONG ANSWERS MARKED BY A CANDIDATE IN THE OBJECTIVE TYPE QUESTION PAPERS.**
  - (i) There are four alternatives for the answer to every question. For each question for which a wrong answer has been given by the candidate, **one-third** of the marks assigned to that question will be deducted as penalty.
  - (ii) If a candidate gives more than one answer, it will be treated as a **wrong answer** even if one of the given answers happens to be correct and there will be same penalty as above to that question.
  - (iii) If a question is left blank *i.e.*, no answer is given by the candidate, there will be **no penalty** for that question.

**DO NOT OPEN THIS TEST BOOKLET UNTIL YOU ARE ASKED TO DO SO**

/; ku na%vuqps'kka dkl fglunh : i klrj bl iqlrdk dsfi Nys i'B ij Nik gA

## PART - A

### SPOTTING ERRORS

**Directions :** Each item in this section has a sentence which is divided into parts labelled (a), (b) and (c). Read each sentence to find out whether there is any error in any part and indicate your answer in the Answer Sheet against the corresponding letter i.e., (a), (b) or (c). If you find no error, your response should be indicated as (d).

1. In a hour's time when I had (a)/ finished the work, I got up (b)/ and slipped out unnoticed. (c)/ No error (d)
2. "Language consists of several stratum", (a)/ said a linguist in his lecture (b)/ on Language and Linguistics. (c)/ No error (d)
3. Her pugnacious daughter always do something (a)/ that may incur insult on her neighbours (b)/ who hold a wrong opinion about her family. (c)/ No error (d)
4. He claims to have read (a)/ Shakespeare's all great tragedies who is (b)/ the greatest playwright of English. (c)/ No error (d)
5. Much to his fortune, he married a girl (a)/ who was more tall and (b)/ lovelier than her elder sister. (c)/ No error (d)
6. The needy man approached (a)/ to the money lender and requested (b)/ him to lend him some money. (c)/ No error (d)
7. Two of my intimate friends called on (a)/ me on yesterday when (b)/ I was away from home. (c)/ No error (d)
8. He did not approve of his son (a)/ raising stupid questions (b)/ and thereby vexing the teacher. (c)/ No error (d)
9. I don't know if any of the members (a)/ of the party is conspiring (b)/ against the President or not. (c)/ No error (d)
10. Shyama said apologetically, (a)/ that "I am not feeling well (b)/ and so I cannot go with you today". (c)/ No error (d)

### SYNONYMS

**Directions :** Each item in this section consists of a sentence with an underlined word, followed by four words. Select the word that is most **similar** in meaning to the underline word.

11. He would have been successful, but for his lack of temerity.  
 (a) audacity                      (b) sincerity                      (c) confidence                      (d) strength
12. Many people buy charms and talismans because they think they will bring them luck.  
 (a) amulets                      (b) tokens                      (c) lucky cards                      (d) stones
13. The Japanese have introduced a nippy little car for joy riders.  
 (a) funny                      (b) cheap                      (c) quick                      (d) expensive
14. Very few of our batsmen have any real consistency.  
 (a) constancy                      (b) competence                      (c) permanence                      (d) uniformity
15. He is employed in an ordnance factory.  
 (a) orthodox                      (b) arms and ammunition  
 (c) electrical and electronic                      (d) ordinary and common

## ANTONYMS

**Directions :** Each item in this section consists of a sentence with an underlined word, followed by four words. Select the word that is most nearly **opposite** in meaning to the underline word.

16. The leader was pragmatic in his approach to the problems facing the country.  
 (a) optimistic (b) idealistic (c) indefinite (d) vague
17. His urbane attitude won him many friends.  
 (a) rude (b) rustic (c) violent (d) indifferent
18. The students expected an eminent scientist to inaugurate the programme.  
 (a) illustrious (b) notorious (c) intelligent (d) unknown
19. The outcome of his mission was more rewarding than he had expected.  
 (a) lucrative (b) disappointing (c) thrilling (d) nail-biting
20. Real happiness does not lie in material possessions alone.  
 (a) physical (b) essential (c) spiritual (d) manual

## ORDERING OF WORDS IN A SENTENCE

**Directions :** Each of the following items in this section consists of a sentence the parts of which have been jumbled. These parts have been labelled P, Q, R and S. Given below each sentence are four sequences namely (a), (b), (c) and (d). You are required to re-arrange the jumbled parts of the sentence and select the correct sequence.

21. science has emerged (P) every great advance in (Q) from a new (R) audacity of imagination (S)  
 (a) PQSR (b) QPRS (c) RSQP (d) SRPQ
22. where Gandhiji stood (P) our long discussions about socialism (Q) had left me (R)  
rather bewildered and confused as to just  
 (S)  
 (a) PSQR (b) QRSP (c) SPQR (d) PSRQ
23. to dispose off the waste matter (P) the modernization would reduce (Q) provide better sanitary facilities (R)  
manual labour considerably and would also  
 (S)  
 (a) PQSR (b) QSRP (c) RQSP (d) SQPR
24. expresses itself in many diverse art forms (P) ancient in origin (Q) the essence of the spirit of Bulgaria (R)  
of great creativity  
 (S)  
 (a) RQPS (b) PRQS (c) SQRP (d) QPSR



## SENTENCE IMPROVEMENT

**Directions :** Look at the underlined part of each sentence. Below each sentence are given three possible substitutions for the underlined part. If one of them, (a), (b) or (c), is better than the underlined part, indicate your response on the Answer Sheet against the corresponding letter (a), (b) or (c). If none of the substitutions improve the sentence, indicate (d) as your response on the Answer Sheet. Thus a 'No improvement' response will be signified by the letter (d).

31. The poor villagers have waited in bitter cold for more than four hours now.  
 (a) have been waiting (b) had waited  
 (c) has been waiting (d) No improvement
32. You must complete this work up to Sunday.  
 (a) within Sunday (b) by Sunday (c) until Sunday (d) No improvement
33. Unless you do not work hard, you won't succeed in life.  
 (a) cannot work hard (b) will not work hard  
 (c) work hard (d) No improvement
34. These are your new shoes, aren't they?  
 (a) isn't it? (b) is it so? (c) are they? (d) No improvement
35. He is better than any boy in the class.  
 (a) any boys (b) all the boys (c) any other boy (d) No improvement

## ORDERING OF SENTENCES

**Directions:** In the following items, each passage consists of six sentences. The first and sixth sentences are given in the beginning as  $S_1$  and  $S_6$ . The middle four sentences in each have been jumbled up. These are labeled P, Q, R and S. You are required to find out the proper sequence of the four sentences and indicate your answer accordingly on the Answer Sheet.

36.  $S_1$ : AIDS is a serious disease.  
 P: It spreads through sexual contact, sharing of needles and from an infected mother to foetus.  
 Q: HIV attacks the immune system which is a vital system in our body helping to fight disease causing germs.  
 R: It is caused by a virus by the name HIV.  
 S: HIV infection leads to AIDS after a few years.  
 $S_6$ : AIDS should be treated with care and kindness.  
 The correct sequence should be  
 (a) RSPQ (b) RPSQ (c) PRQS (d) RPQS
37.  $S_1$ : Our dog Zaida has the habit of roaming freely in the neighbourhood.  
 P: On one occasion we couldn't find her despite searching for her for a long time.  
 Q: Then we asked our neighbour about it.  
 R: Usually, when we cannot find her closeby we take our mini truck and go in search of her.  
 S: We find her in a few minutes, usually.  
 $S_6$ : 'Isn't that your dog?' he said pointing to the dog in our truck.  
 The correct sequence should be  
 (a) QSPR (b) PRQS (c) RSPQ (d) RPSQ

38. S<sub>1</sub>: Once my friend was dusting the rooms.  
 P: She flushed her eye with water for 5 minutes.  
 Q: I told her not to rub her eye forcefully like that.  
 R: She started to rub her eye forcefully with her finger.  
 S: A dust particle fell into her eye.  
 S<sub>6</sub>: At last after some struggle the particle was washed off.  
 The correct sequence should be  
 (a) PSQR (b) QPSR (c) SRQP (d) RQPS
39. S<sub>1</sub>: The real value of Karate, Aikido, Kung Fu and the other martial arts has little to do with physical feats such as breaking bricks or fighting.  
 P: It further tells us that our energy and awareness, our capacity for courage and compassion, are far greater than we have been led to believe.  
 Q: It tells us that we need not fear.  
 R: The real value of martial arts study lies in what it tells us about ourselves.  
 S: It tells us that our personal limits can, therefore, be transcended.  
 S<sub>6</sub>: When that happens, it engenders the feeling of attunement with universal forces, of identification with the mysterious power of life itself.  
 The correct sequence should be  
 (a) PQSR (b) PSQR (c) RQPS (d) SPQR
40. S<sub>1</sub>: Though a mediocre student, I took Science after passing the matriculation examination.  
 P: One of my friends also advised me to honour the wish of my father.  
 Q: The result was that Wordsworth, Shelley and Keats were much better understood by me than Euclid, Newton and Dalton.  
 R: I had an aptitude for the arts.  
 S: My choice was not backed by any fascination or liking for the subject, but was made simply to oblige my deceased father who had wanted me to go for medicine.  
 S<sub>6</sub>: In spite of my deficiency, I was successful in passing the intermediate Science examination.  
 The correct sequence should be  
 (a) SRQP (b) PQSR (c) QPRS (d) SPRQ

### FILL IN THE BLANKS

**Directions:** Each of the following sentences in this section has a blank space and four words or group of words given after the sentence. Select whichever word or group of words you consider most appropriate for the blank space and indicate your response on the Answer Sheet accordingly.

41. The shirt is ..... for me to wear.  
 (a) not clean (b) dirtier (c) too dirty (d) so dirty
42. She is ..... girls I know.  
 (a) one of the best (b) from the best (c) the most best (d) the best
43. You stand a good chance ..... the match.  
 (a) of winning (b) to win (c) for win (d) in winning

44. He said, I ..... use his car whenever I wanted.  
 (a) will (b) would (c) could (d) can
45. If I ..... her address, I would have called on her.  
 (a) will have (b) had known (c) can have (d) shall have

### SELECTING WORDS

**Directions:** In the following passage at certain points you are given a choice of three words marked (a), (b) and (c), one of which fits the meaning of the passage. Choose the best word out of the three. Mark the letter, viz., (a), (b) or (c), relating to this word on your Answer Sheet. Examples K and L have been solved for you.

- |             |                             |                        |
|-------------|-----------------------------|------------------------|
| K           |                             | L                      |
| The (a) boy | was in the school in Shimla | (a) She was home sick. |
| (b) horse   |                             | (b) It                 |
| (c) dog     |                             | (c) He                 |

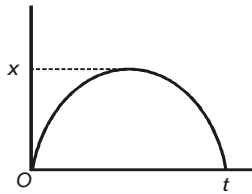
**Explanation:** Out of the list given in item K, only 'boy' is the correct answer because usually, a boy, and not a horse or a dog, attends school. So '(a)' is to be marked on the Answer Sheet for item K. A boy is usually referred to as 'he', so for item L, '(c)' is the correct answer. Notice that to solve the first item K you have to read the rest of the sentence and then see what fits best.

### PASSAGE

46.  
 The gorilla is something of a paradox (a) in the African scene. One thinks one knows him very well.  
 (b) to  
 (c) at
47. He has been (a) attacked and imprisoned in zoos. His bones have been (a) mounted in museums  
 (b) killed (b) set up  
 (c) captured (c) kept
48.  
 everywhere and he has always exerted a strong (a) effect upon scientists. He is an obvious  
 (b) attraction  
 (c) influence
49.  
 (a) attachment with our past.  
 (b) connection  
 (c) link

## PART - B

51. The given Time( $t$ )-Displacement( $x$ ) graph shows:



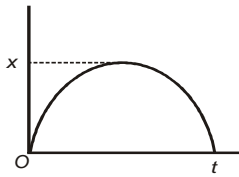
- (a) Uniform straight line motion  
 (b) Non uniform straight line motion  
 (c) Parabolic motion  
 (d) Circular motion
52. Unit of Plancks Constant is same as  
 (a) energy (b) force  
 (c) momentum (d) angular momentum
53. If pressure of a gas is increased by 20%. What will be percentage decrease in volume? (Temp. and mass of gas is constant)  
 (a) 10% (b) 20%  
 (c) 16.67% (d) 3.67%
54. A Force 'F' produces acceleration of  $2 \text{ ms}^{-2}$  in a body of mass 4 kg. What will be the acceleration, if same force is applied on 2 kg?  
 (a)  $4 \text{ ms}^{-2}$  (b)  $2 \text{ ms}^{-2}$   
 (c)  $1 \text{ ms}^{-2}$  (d)  $8 \text{ ms}^{-2}$
55. **Statement I:** A car cannot be accelerated on smooth road.  
**Statement II:** Friction supports tendency to increase velocity.  
 (a) Both the Statements are individually true and Statement II is the correct explanation of Statement I  
 (b) Both the Statements are individually true but Statement II is *not* the correct explanation of Statement I  
 (c) Statement I is true but Statement II is false  
 (d) Statement I is false but Statement II is true
56. A polar satellite is:  
 (a) a satellite close to earth revolving along an orbit over poles.  
 (b) a satellite is revolving over poles only.  
 (c) a satellite appears to be at rest over poles.  
 (d) None of these

57. A man drops a ball from window of a running train. A farmer working in his field will see the path of the ball as  
 (a) Straight line (b) Parabola  
 (c) Horizontal (d) Vertical
58. **Statement I:** As we go up, atmospheric pressure decreases.  
**Statement II:** On going up, density of air increases.  
 (a) Both the Statements are individually true and Statement II is the correct explanation of Statement I  
 (b) Both the Statements are individually true but Statement II is *not* the correct explanation of Statement I  
 (c) Statement I is true but Statement II is false  
 (d) Statement I is false but Statement II is true
59. It is easier to swim in sea than river because:  
 (a) sea is big, river is small.  
 (b) sea water is hard.  
 (c) in sea life guards are always present.  
 (d) density of sea water is more than river water.
60. If amplitude of a simple pendulum is doubled, it's time period will be:  
 (a) Double (b) Same  
 (c) Half (d) One fourth
61. In cold countries juice bottles are kept in water. It is because of:  
 (a) high specific heat capacity of water  
 (b) high viscosity of water  
 (c) to avoid bottles from cracking  
 (d) to keep juice cool
62. At Standard Temperature and Pressure (STP) value of temperature is:  
 (a) 273 K (b)  $273^\circ\text{C}$   
 (c)  $273^\circ\text{F}$  (d)  $0^\circ\text{K}$
63. Reynolds Number is related to:  
 (a) speed of aeroplanes  
 (b) wind speed  
 (c) velocity of liquid through pipes  
 (d) velocity of ship in ocean



Hkk&B

51. fn; k x; k l e; (t)&foLFki u(x) xtQ çnf"kr djrk g%



- (a) , d l eku l jy j[kh; xfr
- (b) vl eku l jy j[kh; xfr
- (c) i joyf; d xfr
- (d) oYkh; xfr

52. lykd fu; rkd dh bdkbz l n"; g%

- (a) mtkz (b) cy
- (c) l ox (d) dks kh; l ox

53. ; fn fdl h xS ds nkc 20% c<k fn; k tk; s rks ml ds vk; ru ea fdrus çfr"kr dh deh gksxl\ 1/4ki , oa nD; eku dks fLFkj j [krs gq 1/2

- (a) 10% (b) 20%
- (c) 16.67% (d) 3.67%

54. , d cy 'F' 4 fdxt ds nD; eku dh oLrq ea 2 eh@l 3 dk Roj.k mRi lu djrk gA ogh cy 2 fdxt dh oLrqea fdrus Roj.k mRi lu djrk

- (a) 4 eh@l 3 (b) 2 eh@l 3
- (c) 1 eh@l 3 (d) 8 eh@l 3

55. dFku I % , d dkj fpduh l Mel ij Rofjr ughagls l drh gA

dFku II %?k'kz.k] ox c<kusdh çofYk dks c<krk gA

- (a) nksuka dFku vvx&vyx l R; gS vkSj dFku II, dFku I dk l gh Li 'Vhdj.k gS
- (b) nksuka dFku vvx&vyx l R; gS fdlurq dFku II, dFku I dk l gh Li 'Vhdj.k ughagS
- (c) dFku I l R; gS fdlurq dFku II vl R; gS
- (d) dFku I vl R; gS fdlurq dFku II l R; gS

56. /kph; mi xg%

- (a) i Foh ds fudV mYkj h /kph , oa nf{k.k kh /kph ds Åij l s xqt jus okyh d{k ds vufn" k ifjØek djrk gA
- (b) dDy /kph ds Åij ?nerk gA
- (c) /kph ds Åij #dk gYk çrhr gkrk gA
- (d) bu ea l s dkbz ugha

57. , d euq; pyr h gBz jyxkMh dh f[kMeh l s , d xn fxjkrk gS fdl h [kr ea dke djrs gq fdl ku dks xn dh xfr çrhr gksxt%

- (a) l jy j[kh; (b) i joyf; d
- (c) {kfrt (d) m/okZkj

58. dFku I % tc ge Åij tkrs gA ok; e. Myh; nkc de gkrk gA

dFku II % Åij tkus ij ok; qdk ?kuRo c<rk gA

- (a) nksuka dFku vvx&vyx l R; gS vkSj dFku II, dFku I dk l gh Li 'Vhdj.k gS
- (b) nksuka dFku vvx&vyx l R; gS fdlurq dFku II, dFku I dk l gh Li 'Vhdj.k ughagA
- (c) dFku I l R; gS fdlurq dFku II vl R; gS
- (d) dFku I vl R; gS fdlurq dFku II l R; gS

59. unh dh vi {kk l epz ea rjuk vkl ku gS D; kfd%

- (a) l epz cMk gkrk gS unh Nk/h gkrh gA
- (b) l epz ty dBkSj gkrk gA
- (c) l epz ea thou j{kdk dh rdkrh jgrh gA
- (d) l epz ds ty dk ?kuRo unh ds ty l s vf/kd gkrk gA

60. ; fn fdl h l jy ykyd dk vk; ke nksapk dj fn; k tk; s rks ml dk vkorZky gk tk; s k%

- (a) nksapk (b) cjkj jgsk
- (c) vk/kk (d) pkfkkbz

61. B. Ms çns'kka ea tih dh ckrYka dks i kuh ea j [krs gA bl dk dkj .k g%

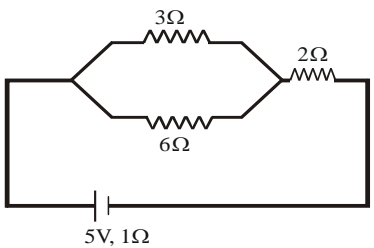
- (a) ty dh vf/kd fof" k'V m'ek
- (b) ty dh vf/kd " ; kurk
- (c) ckrYka dks VVus l s cplus ds fy; s
- (d) tih dks B/Mk j [kus ds fy; s

62. l kekl; rki , oa nkc 1/4 k-rk-nk-1/2 ij rki dk eku gkrk g%

- (a) 273 K (b) 273°C
- (c) 273°F (d) 0°K

63. jukMh l ; k l Ecfu/kr g%

- (a) ok; q kuka dh xfr l s
- (b) ok; q dh xfr l s
- (c) i kbi l s noka dh xfr l s
- (d) l epz ea tgtkka dh xfr l s

64. An engine can not be made 100% efficient because:  
 (a) friction can not be removed completely  
 (b)  $0^{\circ}\text{K}$  temperature cannot be obtained  
 (c) perfect conductor or perfect insulator is not possible  
 (d) Both (a) and (b)
65. Siphon works on:  
 (a) Stokes law  
 (b) Bernoulli's law  
 (c) Archimedes principle  
 (d) Newton's law
66. When salt is mixed with ice its melting point:  
 (a) rises  
 (b) remains unchanged  
 (c) decrease  
 (d) cannot be predicted
67. Dip angle at the equator will be:  
 (a)  $0^{\circ}$  (b)  $45^{\circ}$   
 (c)  $90^{\circ}$  (d)  $180^{\circ}$
68. A cyclotron is a device to accelerate :  
 (a) Electron  
 (b) Neutron  
 (c) Proton  
 (d) both (b) and (c)
69.   
 Current in  $6\Omega$  resistance will be:  
 (a)  $\frac{2}{3}$  Amp. (b)  $\frac{1}{3}$  Amp.  
 (c)  $\frac{4}{3}$  Amp. (d)  $\frac{3}{4}$  Amp.
70. A mirror which can make virtual as well as real image is:  
 (a) Convex mirror (b) Concave mirror  
 (c) Plane mirror (d) None of these
71. Electromagnetic waves used to operate remote are:  
 (a) x-rays  
 (b)  $\gamma$ -rays  
 (c) Ultra violet rays  
 (d) Infrared rays
72. Two bulbs rated as 220V-100W and 220V-40W are used in 440V in series, which bulb will fuse?  
 (a) 40W (b) 100W  
 (c) both (a) and (b) (d) None of these
73. A p-type semiconductor is obtained by pure Germanium crystal by doping with:  
 (a) Aluminium (b) Arsenic  
 (c) Phosphorus (d) Carbon
74. The nucleus of singly ionized carbon atom contains:  
 (a) 6 protons and 6 neutrons  
 (b) 5 protons and 6 neutrons  
 (c) 6 protons, 6 neutrons and 6 electrons  
 (d) 12 protons, 6 neutrons and 6 electrons
75. Consider the following pairs of ions or atoms:  
 1.  $\text{Na}^+$  and Ne 2.  $\text{Na}^+$  and  $\text{K}^+$   
 3.  $\text{K}^+$  and  $\text{Cl}^-$   
 In which of these pair are the ions/atoms iso-electronic with each other?  
 (a) 1, 2 and 3 (b) 1 and 2  
 (c) 2 and 3 (d) 1 and 3
76. Which of the following statement with regard to isotopes and isobars is/are correct?  
 1. Isotopes have same mass number.  
 2. Isobars have same atomic number.  
 Select the correct answer using the codes given below.  
**Codes:**  
 (a) Only 1 (b) Only 2  
 (c) Both 1 and 2 (d) Neither 1 nor 2
77. Which one of the following is used as a moderator in the nuclear reactor?  
 (a) Thorium (b) Graphite  
 (c) Radium (d) Ordinary water

64. fdl h batu dh n{krk 100% ugha gks l drh gS D; kfd%

- (a) ?k'kz k dks ij h rjg l eklr ughafd; k tk l drk gA
- (b) 0° rki çklr ughafd; k tk l drk gA
- (c) i wkZ l pkyd ; k i wkZ d pkyd çklr djuk l EHko ugha gA
- (d) (a) , 0a (b) nksuka

65. l kbQu dk; Z djrk gS

- (a) LVkd dsfu; e ij
- (b) cjuklyh dsfu; e ij
- (c) vkfdZEMht dsfl ) klr ij
- (d) U; wu dsfu; e ij

66. cQZ ea ued feykus l sml dk xyukad%

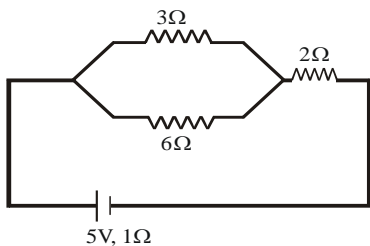
- (a) c<+ tkrk gS
- (b) vijofrZ jgrk gS
- (c) de gks tkrk gS
- (d) dN dgk ugha tk l drk gS

67. Hkæ/; jçkk ij ufr dsk dk eku gksk%

- (a) 0°
- (b) 45°
- (c) 90°
- (d) 180°

68. l kbDyKs/Ru , d ; fDr gS tks Rofjr djrh gS

- (a) byDVRU dks
- (b) U; wRU dks
- (c) çk/Ru dks
- (d) (b) vKj (c) nksuka



69.

6Ω çfrjksk ea/kkj gksk%

- (a)  $\frac{2}{3}$  , fEi ; j
- (b)  $\frac{1}{3}$  , fEi ; j
- (c)  $\frac{4}{3}$  , fEi ; j
- (d)  $\frac{3}{4}$  , fEi ; j

70. og nizk tks vkHkl h rFkk okLrfod nksuka çfrfcEc cuk l drk gS og gS

- (a) mYky nizk
- (b) vory nizk
- (c) lery nizk
- (d) buea l s dkbZ ugha

71. fjek/ dks pykus dsfy; sftu fo | ç pñcdh; rjæka dk mi ; kx gkrk gS os gS

- (a) x-fdj .ka
- (b) γ-fdj .ka
- (c) ijkcSuh fdj .ka
- (d) vojDr fdj .ka

72. 220V-100W rFkk 220V-40W eku ds nks cYca dks Jskh Øe ea 440V ds l kFk ç; kx fd; k tkrk gS rks dks l k cYc ¶; ut gksk

- (a) 40W
- (b) 100W
- (c) a rFkk b nksuka
- (d) buea l s dkbZ ugha

73. p-Vkbi v/kyd çklr djus dsfy; s"kp tjesu; e fØLVy ea feyk; k tk; sk%

- (a) , Y; fiesu; e
- (b) vkl ßud
- (c) QkQkj l
- (d) dkcZu

74. dkcZu ds , dy vk; uhÑr ijek. kq ds ukfHkd ea gkrk gS

- (a) 6 çk/Ru rFkk 6 U; wRU
- (b) 5 çk/Ru rFkk 6 U; wRU
- (c) 6 çk/Ru] 6 U; wRU rFkk 6 byDVRU
- (d) 12 çk/Ru] 6 U; wRU rFkk 6 byDVRU

75. fuEufyf[kr vk; uka ; k ijek. kq/ka ds ; æka dk v/ ; u dj%

- 1. Na<sup>+</sup> rFkk Ne
- 2. Na<sup>+</sup> rFkk K<sup>+</sup>
- 3. K<sup>+</sup> rFkk Cl<sup>-</sup>

dks l k vk; u@ijek. kq; æe l ebyDVRUud gA

- (a) 1, 2 vKj 3
- (b) 1 vKj 2
- (c) 2 vKj 3
- (d) 1 vKj 3

76. l eLFkfudka rFkk l ehkfjdka ds l Ecu/k ea fn; s x; s fuEufyf[kr dFkuka ea l s dks l k@l s dFku l R; gS

- 1- l eLFkfudka dh nØ; eku l æ; k l eku gkrh gA
- 2- l ehkfjdka dh ijek. kq l æ; k l eku gkrh gA

uhps fn; s x; s dW dk ç; kx dj l gh mRrj pñu; % dW%

- (a) døy 1
- (b) døy 2
- (c) 1 rFkk 2 nksuka
- (d) u rks 1 vKj u gh 2

77. buea l sfdl s ijek. kq HkfVV; ka ea , d end ds : i ea ç; kx fd; k tkrk gS

- (a) FkKj ; e
- (b) xQkbV
- (c) jSM; e
- (d) l k/kj .k ty

78. What are the types of bonds present in  $\text{CuSO}_4 \cdot 5\text{H}_2\text{O}$  ?  
 (a) Electrovalent and covalent  
 (b) Electrovalent and coordinate  
 (c) Electrovalent, covalent, coordinate and hydrogen bond  
 (d) Covalent and coordinate covalent
79. Which one among the following has been producing/ can produce light by a chemical change?  
 (a) Sun  
 (b) Moon  
 (c) Electric bulb  
 (d) Lighting and thunder
80. Which one among the following metals is more reactive than hydrogen?  
 (a) Mercury (b) Copper  
 (c) Silver (d) Tin
81. What is the correct increasing order of electronegativity for the most common oxidation states among the following elements?  
 (a)  $\text{F} < \text{O} < \text{N} < \text{C}$  (b)  $\text{O} < \text{N} < \text{C} < \text{F}$   
 (c)  $\text{C} < \text{N} < \text{F} < \text{O}$  (d)  $\text{C} < \text{N} < \text{O} < \text{F}$
82. Which one among the following is the correct order of reactivity of the elements?  
 (a)  $\text{Cu} > \text{Mg} > \text{Zn} > \text{Na}$  (b)  $\text{Na} > \text{Zn} > \text{Mg} > \text{Cu}$   
 (c)  $\text{Cu} > \text{Zn} > \text{Mg} > \text{Na}$  (d)  $\text{Na} > \text{Mg} > \text{Zn} > \text{Cu}$
83. Match **List I** with **List II** and select the correct answer using the codes given below the Lists.
- | <b>List I</b>       | <b>List II</b>                             |
|---------------------|--|
| <b>(Fuel gases)</b> | <b>(Major constituents)</b>                |
| A. CNG              | 1. Carbon mono-oxide,<br>Hydrogen          |
| B. Coal gas         | 2. Butane, Propane                         |
| C. LPG              | 3. Methane, Ethane                         |
| D. Water gas        | 4. Hydrogen, Methane,<br>Carbon mono-oxide |
- Codes:**
- |     | <b>A</b> | <b>B</b> | <b>C</b> | <b>D</b> |
|-----|----------|----------|----------|----------|
| (a) | 2        | 1        | 3        | 4        |
| (b) | 3        | 4        | 2        | 1        |
| (c) | 2        | 4        | 3        | 1        |
| (d) | 3        | 1        | 2        | 4        |
84. Which one of the following reducing agents can also act as an oxidising agent?  
 (a)  $\text{H}_2$  (b)  $\text{H}_2\text{S}$   
 (c)  $\text{SO}_2$  (d) HI
85. Why hard water does not give lather with soap?  
 (a) Hard water contains calcium and magnesium ions which form precipitate with soap.  
 (b) Hard water contains sulphate and chloride ions which form precipitate.  
 (c) pH of hard water is high.  
 (d) pH of hard water is less.
86. Which one among the following agents is added to domestic LPG cylinder to help in the detection of gas leakage?  
 (a) Methanol (b) Ethanol  
 (c) Thioethanol (d) Chloroform
87. Saffron is obtained from which part of plants?  
 (a) Leaf  
 (b) Stem  
 (c) Anther and whole flower  
 (d) Stigma and style
88. Soft drinks such as coco contain significant quantities of:  
 (a) caffeine (b) nicotine  
 (c) tannin (d) renin
89. By which combination of chromosome, a child will be male?  
 (a) X from male and X from female  
 (b) X from male and Y from female  
 (c) Y from male and X from female  
 (d) Y from male and Y from female
90. Consider the following statement:  
 1. The sugar present in DNA is deoxyribose.  
 2. Circular DNA occurs in bacteria, mitochondria and chloroplast.  
 3. The bond present between two strands of DNA is hydrogen bond.  
 Which of the statements given above are true about DNA?  
 (a) 1 and 2 (b) 2 and 3  
 (c) 1, 2 and 3 (d) None of these

78.  $CuSO_4 \cdot 5H_2O$  eafdl çdkj dscđk ik; s tkrsgđ  
 (a) fo | ĩ I a ksth rFkk I gl a ksth  
 (b) fo | ĩ I a ksth rFkk mi I gl a ksth  
 (c) fo | ĩ I a ksth I g I a ksth mi I gl a ksth rFkk gkbMst u cl/k  
 (d) I gl a ksth rFkk mi I g; ksth I gl a ksth cl/k
79. fuEufyf[kr ea l s dks I k , d] jkl k; fud ifjorŰ ds }kjk çdk" k mRi luu djrk jgk g@dj I drk gđ  
 (a) I Ű Z  
 (b) plnek  
 (c) fo | ĩ cYc  
 (d) fctyh dh ped rFkk xjt
80. buea l s dks I h /kkrq gkbMst u dh vi űkk T; knk I fŰ; gđ  
 (a) i kjk (b) rkck  
 (c) plnh (d) fVu
81. fuEufyf[kr rŰoka ea l cl s I kekl; vkDI hdj .k voLFkkvka ds fy; s mudh fo | ĩ \_\_.kkRedrk dk I gh c<Fk Űe D; k gđ  
 (a)  $F < O < N < C$  (b)  $O < N < C < F$   
 (c)  $C < N < F < O$  (d)  $C < N < O < F$
82. fuEufyf[kr rRokadh I fŰ; rk dk I gh Űe D; k gđ  
 (a)  $Cu > Mg > Zn > Na$  (b)  $Na > Zn > Mg > Cu$   
 (c)  $Cu > Zn > Mg > Na$  (d)  $Na > Mg > Zn > Cu$
83. I ph I dks I ph II ds l kFk I eűyr djarFkk uhps fn; sx; s dlvkađk ç; kx I sl gh mRrj dk p; u dj%  

<p><b>I ph I</b>                  1/2ku xđ 1/2                  A. CNG                  B. dks yk xđ                  C. LPG                  D. okVj xđ</p>	<p><b>I ph II</b>                  1/2q; I đkVd1/2                  1. dkcŰ eksks/kDI kbM] gkbMst u                  2. C; W/s] çki s                  3. ehFks] bFks                  4. gkbMst u] ehFks] dkcŰ eksks/kDI kbM]</p>
--	--

dlv%

	<b>A</b>	<b>B</b>	<b>C</b>	<b>D</b>
(a)	2	1	3	4
(b)	3	4	2	1
(c)	2	4	3	1
(d)	3	1	2	4

84. fuEu ea l s dks I k vip; d , tŰV] vkDI hŰr , tŰV dh Hkkfr Hkh dk; Zdj I drk gđ  
 (a)  $H_2$  (b)  $H_2S$   
 (c)  $SO_2$  (d) HI
85. dBlj ty I kcu ds l kFk >kx D; ka ugha nrk  
 (a) dBlj ty eĭ dűY" k; e rFkk eXuhf" k; e ds vk; u gkrsgđ tks l kcu ds l kFk fo{ki cukrk gđ  
 (b) dBlj ty ea l YQV rFkk DykjbM ds vk; u gkrsgđ tks fo{ki cukrk gđ  
 (c) dBlj ty dk pH mPp gkrk gđ  
 (d) dBlj ty dk pH de gkrk gđ
86. fuEu ea l s d l , tŰV dks ?kjsyWLPG fl ys Mj ea xđ fjl ko dk irk yxkus grq ç; kx fd; k tkrk gđ  
 (a) ehFkukly (b) bFkukly  
 (c) Fkk; kbFkukly (d) DykjkŰkeZ
87. dđ j] ouLifr; ka dsfdl Hkkx I űklr dh tkrh gđ  
 (a) i Rrh  
 (b) ruk  
 (c) , ŰFkj rFkk I eps i ĩi  
 (d) fLVxek rFkk LVkby
88. dks tđ senqis ka ea Hkji j ek=k ea ik; k tkrk gđ  
 (a) dŰhu (b) fudks/hu  
 (c) Vűuu (d) jűuu
89. xqk I űka dsfdl I a kst u l s uj f" k" kq i űk gksck%  
 (a) i ĩ" k ds X rFkk L=h ds X xqkl ű l s  
 (b) i ĩ" k ds X rFkk L=h ds Y xqkl ű l s  
 (c) i ĩ" k ds Y rFkk L=h ds X xqkl ű l s  
 (d) i ĩ" k ds Y rFkk L=h ds Y xqkl ű l s
90. fuEufyf[kr dFkuka ij fopkj dj%  
 1. DNA ea ekst m "kdj k] Mh vkDI hj kckst gkrh gđ  
 2. dhvk. kv/ka ea rFkk ekbVksd kM. M<sup>a</sup>, k , oa Dykjk ksykLV ea oRrkdkj Mh, u-, - ik; k tkrk gđ  
 3. DNA ds nksa Qhria dse/; gkbMst u cl/k gkrsgđ  
 DNA ds l Ecl/k ea fn; s x; s mi j kDr dFkuka ea l s dks I s dFku I R; gđ  
 (a) 1 vđ 2 (b) 2 vđ 3  
 (c) 1, 2 vđ 3 (d) buea l s dkbZ ugh

91. Which of the following cell organelles play the most significant role in protein synthesis?  
 (a) Lysosome and centrosome  
 (b) Endoplasmic reticulum and ribosome  
 (c) Golgi apparatus and mitochondria  
 (d) Lysosome and mitochondria
92. Which of the following organelles of a cell is/are involved in photosynthesis?  
 (a) Chloroplast  
 (b) Mitochondrion  
 (c) Endoplasmic reticulum  
 (d) Golgi bodies
93. Match **List I** with **List II** and select the correct answer using the codes given below the Lists.

<b>List I</b> <b>(Disease)</b>	<b>List II</b> <b>(Organism)</b>
A. Malaria	1. Fungi
B. Polio myelitis	2. Bacteria
C. Tuberculosis	3. Virus
D. Ringworm	4. Protozoan

**Codes:**

A	B	C	D
(a) 4	3	2	1
(b) 3	2	1	4
(c) 2	1	4	3
(d) 1	4	3	2

94. Which of the following hormone is called emergency hormones?  
 (a) Insulin (b) Adrenaline  
 (c) Oestrogen (d) Oxytocin
95. Match **List I** with **List II** and select the correct answer using the codes given below the Lists.

<b>List I</b> <b>(Common Name)</b>	<b>List II</b> <b>(Vitamin)</b>
A. Calciferol	1. Vitamin-A
B. Retinol	2. Vitamin-E
C. Ascorbic acid	3. Vitamin-C
D. Tocopherol	4. Vitamin-D

**Codes:**

A	B	C	D
(a) 4	1	3	2
(b) 1	4	3	2
(c) 4	3	2	1
(d) 3	2	1	4

96. Consider the following statements:  
 1. Artery carries pure oxygenated blood from the heart to body tissues.  
 2. Pulmonary artery carries deoxygenated blood.  
 3. Veins carry deoxygenated blood from body tissues towards the heart.  
 4. Pulmonary vein carries oxygenated blood.  
 Which of the statements given above are correct?  
 (a) 1 and 2 (b) 1, 2 and 3  
 (c) 2, 3 and 4 (d) 1, 2, 3 and 4

97. The Indus Valley people traded with the:  
 (a) Chinese (b) Mesopotamians  
 (c) Parthians (d) Romans
98. The practice of military governorship was first introduced in India by the:  
 (a) Greeks (b) Sakas  
 (c) Parthians (d) Mughals
99. Agnimitra, the hero of Kalidasa's Malavikagnimitram belonged to which dynasty?  
 (a) Shunga dynasty (b) Kanva dynasty  
 (c) Satavahana dynasty (d) Gupta dynasty

100. Consider the following:  
 1. Tughlaqabad Fort 2. Lodhi Garden  
 3. Qutub Minar 4. Fatehpur Sikri  
 The correct chronological order in which they were built is  
 (a) 3, 1, 4, 2 (b) 3, 1, 2, 4  
 (c) 1, 3, 2, 4 (d) 1, 3, 4, 2

101. Match **List I** with **List II** and select the correct answer using the codes given below the lists:

<b>List I</b>	<b>List II</b>
A. Iqta	1. Marathas
B. Jagir	2. Delhi Sultans
C. Amaram	3. Mughals
D. Mokasa	4. Vijayanagara

**Codes:**

A	B	C	D
(a) 3	2	1	4
(b) 2	3	4	1
(c) 2	3	1	4
(d) 3	2	4	1

91. uhp s fn; s x; s Ård vaka ea dks I k vak çks/hu I åysk.k ea l cl segROI wZ Hkfedk fuHkrs g&

- (a) ykb t kst ke , oa l s V kst ke
- (b) bUMktykfTed j s/hdnye rFk j k bckst ke
- (c) xkY th fudk; , oa ekbVkd kf. M<sup>a</sup>, k
- (d) ykb t kst ke rFk ekbVkd kf. M<sup>a</sup>, k

92. dks"kd dsbueal s dks I k@l svax çdk" k I åysk.k fØ; k ea "kkfey g&

- (a) gfjryod
- (b) ekbVkd kf. M<sup>a</sup>, k
- (c) , UMktykfTed j sVdnye
- (d) xkY th fudk;

93. I ph I dks I ph II I s l e sy r dja r Fk uhp s fn; s x; s d w/ka dk ç; k s dj I gh mRrj dk p; u dj %

- |                       |                  |
|-----------------------|------------------|
| <b>I ph I</b>         | <b>I ph II</b>   |
| <b>½ jkx ½</b>        | <b>½ t ho ½</b>  |
| A. eyfj; k            | 1. dod           |
| B. i ksy; ks ek, ysVI | 2. t hok. kq     |
| C. {k; j kx           | 3. fo'kk. kq     |
| D. nkn                | 4. çks/kst ks/vk |

dw%

- |       |   |   |   |
|-------|---|---|---|
| A     | B | C | D |
| (a) 4 | 3 | 2 | 1 |
| (b) 3 | 2 | 1 | 4 |
| (c) 2 | 1 | 4 | 3 |
| (d) 1 | 4 | 3 | 2 |

94. fuEu eal s dks I k gkjeku ¼ dVdkyhu ½ vki kr dky gkjeku dg ykrk g%

- (a) b d fyu (b) , M hufyu
- (c) vks LVkst u (d) vkDI hVkfI u

95. I ph I dks I ph II I s l e sy r dja r Fk uhp s fn; s x; s d w/ka dh I gk; rk I s I gh mRrj dk p; u dj %

- |                      |                    |
|----------------------|--------------------|
| <b>I ph I</b>        | <b>I ph II</b>     |
| <b>¼ keld; uke ½</b> | <b>½ oV kfeu ½</b> |
| A. dSYI Qj kly       | 1. foV kfeu&A      |
| B. j sVukly          | 2. foV kfeu&E      |
| C. , LdkfcZd vE y    | 3. foV kfeu&C      |
| D. Vkd kQj kly       | 4. foV kfeu&D      |

dw%

- |       |   |   |   |
|-------|---|---|---|
| A     | B | C | D |
| (a) 4 | 1 | 3 | 2 |
| (b) 1 | 4 | 3 | 2 |
| (c) 4 | 3 | 2 | 1 |
| (d) 3 | 2 | 1 | 4 |

96. fuEufyf [kr dFkuka dk v/; ; u dj %

- 1. /keuh "kq) vkDI hÑr jDr dks gn; I s "kj hj dh dks"kd kvka rd I pj.k dj rh g&
- 2. QqIQd /keuh vukDI hÑr jDr dks ys tkrh g&
- 3. f"jk vkva }kjk "kj hj dh dks"kd kvka I s gn; dh vj vukDI hÑr jDr dk I pj.k gkrk g&
- 4. QqIQd f"jk vkDI hÑr jDr ys tkrh g&

- (a) 1 rFk 2 (b) 1] 2 rFk 3
- (c) 2] 3 rFk 4 (d) 1] 2] 3 rFk 4

97. fl akq ?kkVh ds ykx fdl ds I kFk 0; ki kj djrs Fks

- (a) phuh okl h (b) ed ki ks/kfe; k okl h
- (c) i kFkZ okl h (d) j k okl h

98. I Ø; jkt0; oLFk dh i Fk Hkjr ea l oã Fke fdl ds }kjk "kq gpZ

- (a) ; wkfu; ka (b) "kdka
- (c) i kFkZ; ka (d) eqy ka

99. dkyhnl dsekYkfodkfxufe=e-ds uk; d] vfXufe=dk I Ecu/k fdl oãk I s Fk\

- (a) "kq oãk (b) d.o oãk
- (c) I kRkokgu oãk (d) xqr oãk

100. fuEufyf [kr ij fopkj dj %

- 1. rçydkckn dk fdyk 2. yknh dk ckx
- 3. d rçehukj 4. Orgj I hdjh

- (a) 3, 1, 4, 2 (b) 3, 1, 2, 4
- (c) 1, 3, 2, 4 (d) 1, 3, 4, 2

101. I ph I vj I ph II dks fey ku dfj; s vj uhp s fn, x, dw ea l s I gh mRrj p f u, %

- |               |                    |
|---------------|--------------------|
| <b>I ph I</b> | <b>I ph II</b>     |
| A. bDrk       | 1. ejk Bk          |
| B. tkxhj      | 2. fnYyh ds I yrku |
| C. veje-      | 3. eqy             |
| D. ekdki k    | 4. fot; uxj        |

dw%

- |       |   |   |   |
|-------|---|---|---|
| A     | B | C | D |
| (a) 3 | 2 | 1 | 4 |
| (b) 2 | 3 | 4 | 1 |
| (c) 2 | 3 | 1 | 4 |
| (d) 3 | 2 | 4 | 1 |

102. Consider the following statements:

1. The Lucknow Pact of 1916 promoted the spirit of unity between the Indian National Congress and the All India Muslim League.
2. Tilak was opposed to the signing of the Lucknow Pact.

Which of the statement/(s) given above is/are correct?

- (a) Only 1                      (b) Only 2  
(c) Both 1 and 2              (d) Neither 1 nor 2

103. Arrange the following events in correct chronological order and answer the questions on the basis of the codes given below:

1. Ilbert Bill Controversy
2. The First Delhi Darbar
3. The Queen's Proclamation
4. First Factory Act

**Codes:**

- (a) 1, 2, 3, 4                      (b) 2, 1, 3, 4  
(c) 3, 4, 1, 2                      (d) 3, 2, 4, 1

104. **Statement I** : During the tenure of Provincial Government of Congress the Trade Union Movement intensified.

**Statement II** : Congress Ministries adopted pro-labour attitude and promoted the cause of civil liberties.

**Code:**

- (a) Both the Statements are individually true and Statement II is the correct explanation of Statement I  
(b) Both the Statements are individually true but Statement II is *not* the correct explanation of Statement I  
(c) Statement I is true but Statement II is false  
(d) Statement I is false but Statement II is true

105. Who among the following were official Congress negotiators with Cripps Mission?

- (a) Mahatma Gandhi and Sardar Patel  
(b) Acharya JB Kripalani and C Rajagopalachari  
(c) Pandit Nehru and Maulana Azad  
(d) Dr. Rajendra Prasad and Rafi Ahmed Kidwai

106. Which of the following statements are true about the Simon Commission?

1. It was appointed to enquire into the working of the 1919 Act.
2. It was headed by Sir John Simon.
3. It recommended a Federal form of Government.
4. It was opposed by the Indian leaders.

Select the correct answer using the codes given below:

**Codes:**

- (a) 1 and 2                      (b) 1, 2 and 3  
(c) 2, 3 and 4                      (d) All of these

107. As an alternative to the partition of India, Gandhiji suggested to Mountbatten that he should:

- (a) postpone granting of independence  
(b) invite Jinnah to form the government  
(c) invite Nehru and Jinnah to form the government together  
(d) invite the Army to take over for some time

108. The theory of scientific socialism is largely based on the teachings of

- (a) Lenin                      (b) Stalin  
(c) Karl Marx                      (d) Mao Tse-fung

109. The ruler who stated "I am the State" was

- (a) Louis XIV                      (b) Frederick the Great  
(c) Napoleon                      (d) Catherine the Great

110. Who presided over the first meeting of the Indian Constituent Assembly?

- (a) Dr. Rajendra Prasad      (b) Sachchidananda Sinha  
(c) BR Ambedkar              (d) HV Kamath

111. The Preamble of Indian Constitution reads India as:

- (a) Sovereign, Democratic, Socialist, Secular Republic  
(b) Socialist, Sovereign, Democratic, Secular Republic  
(c) Democratic, Sovereign, Secular, Socialist Republic  
(d) Sovereign, Socialist, Secular, Democratic Republic



102- fuEufyf[kr dFkukā ij fopkj dj%

- 1916 ds y[kuÅ l e>kšs us Hkkjrh; jk'Vh; dksxl rFkk vf[ky Hkkjrh; eflYe yhx ea , drk dh Hkkouk dks c<k; kA
- fryd] y[kuÅ l e>kšs ij gLrk{kj dsfo#) FkA

uhpsfn; sx; s dksu l k@l s dFku l gh g@g&

- (a) dōy 1 (b) dōy 2  
(c) 1 RkFkk 2 nksuka (d) u rks 1 u gh 2

103- fuEufyf[kr ?kVukvka dks l gh dkyØe ea yxkb, rFkk uhpsfn, x, dW/kadsvk/kkj ij i'ukadsmRrj nhft, %

- bYcVzfcy fookn
- i Fke fnYyh njckj
- egkjkuh dh ?kšk.kk
- i Fke dkj [kkuk vf/kfu; e

**dlw%**

- (a) 1, 2, 3, 4 (b) 2, 1, 3, 4  
(c) 3, 4, 1, 2 (d) 3, 2, 4, 1

104- **dFku I**: dksxl dh iLrh; l jdkj dsdk; Bky ea etnij l ak vkUnkyu rst gks x; kA

**dFku II**: dksxl ea=ky; ks us etnijka ds fgrka ds l eFku dk još k vi uk; k rFkk ukxfjd Lorark dks c<kok fn; kA

**dlw%**

- (a) nksuka dFku vyx&vyx l R; gšvš dFku II, dFku I dk l gh Li 'Vhdj .k gš  
(b) nksuka dFku vyx&vyx l R; gšfdUrqdFku II, dFku I dk l gh Li 'Vhdj .k ughagš  
(c) dFku I l R; gš fdUrqdFku II vl R; gš  
(d) dFku I vl R; gš fdUrqdFku II l R; gš

105- buea l s dksu fØll fe"ku ds l kFk vf/kdkfjd rš ij dksxl ds okrkBdkj FkA

- egkRek xk/kh rFkk l jnkj iVsy
- vkpk; Zts ch -i ykuh rFkk l h- jktxki kykpkjh
- iMlr usg: rFkk ekSykuk vktkn
- MKW jktBnz i d kn rFkk jQh vgen fdnobz

106- l kbeu vk; kx dsckjs ea dksu l sfuEu dFku l gh g&

- bl dk xBu 1919 vf/kfu; e dsdk; Zdh tkp dsfy, gqk FkA
- bl ds v/; {k l j tkk l kbeu FkA
- bl us l akh; l jdkj dh fl Qkfj "k dhA
- Hkkjrh; uskvka }kjk bl dk fojšk fd; k x; kA uhpsfn; sx; s dW dk ç; kx dj l gh mRrj pñu; %

**dlw%**

- (a) 1 rFkk 2 (b) 1, 2 rFkk 3  
(c) 2] 3 rFkk 4 (d) mi ; Dr l Hk

107- Hkkjr ds c;Vokjs ds fodYi ds : i eñ xk/khth us ekm.VcVku dks l ykg nh dh og%

- vktknh dks Vky na
- ftluk dks l jdkj cukus dk U; kš-k na
- ug; vš ftluk dksfeydj l jdkj cukus dk U; kš-k na
- dñ l e; dsfy, l uk dks vf/kdkj na

108- oKkfud l ektokn dk fl )kar] eq; r% fdl dh f"kk{kvkā ij vk/kkfjr g%

- (a) yšuu (b) LVfyu  
(c) dYkZ ekDI Z (d) ekvks RI s rē

109- jktk ftl us dgk Fk "eS gh jkT; gñ Fk%

- (a) ybā &14 (b) Ymfjd egku  
(c) us ksy; u (d) dškj u egku

110- Hkkjrh; l io/kku l Hk ds i Fke cBd dh v/; {krk fdl us dh\

- (a) MKW jktBnz i d kn (b) l fPpnkuln fl Ugk  
(c) ch-vkj- vEcMdj (d) , p-oh- dkkFk

111- Hkkjrh; l io/kku dh iLrkouk Hkkjr dks crkrh g%

- l Ei Hkñ ykdrkā=d] l kE; oknh] /keZuji {k} x.kj kT;
- l kE; oknh] l Ei Hkñ ykdrkā=d] /keZuji {k} x.kj kT;
- ykdrkā=d] l Ei Hkñ /keZuji {k} l kE; oknh x.kj kT;
- l Ei Hkñ l kE; oknh] /keZuji {k} ykdrkā=d x.kj kT;

112. Consider the following statements:

The Fundamental Rights under the Indian Constitution are Fundamental because:

1. they are protected and enforced by the Constitution.
2. they can be suspended only in the manner prescribed by the Constitution.
3. they are enforceable against the State.
4. they cannot be amended.

Which of the statements given above are correct?

- (a) 1 and 4                      (b) 2 and 3  
(c) 1, 3 and 4                (d) 1, 2 and 3

113. Which of the following duties have been prescribed for the citizens?

1. To develop scientific temper.
2. To preserve rich heritage of our composite culture.
3. To organise village panchayats.
4. To minimize inequalities in income.
5. To secure a uniform civil code.
6. To defend the country.

Select the correct answer using the codes given below:

**Codes:**

- (a) 1, 3 and 4                (b) 3, 4 and 5  
(c) 1, 2 and 6                (d) 2, 5 and 6

114. Which of the following powers are available to the President of India but not to the Governor of a State?

1. Power to grant pardon in case of death sentence.
2. Diplomatic powers.
3. Power to veto the bills passed by the State Legislature.
4. Power to declare emergency.

Select the correct answer using the codes given below:

**Code:**

- (a) 1 and 4                      (b) 2 and 3  
(c) 1, 2 and 3                (d) 1, 2 and 4

115. The Speaker of the Lok Sabha may be removed from office by

- (a) the majority party in the house adopting a no-confidence motion.
- (b) a resolution passed by not less than half of the total membership of the house.
- (c) a resolution passed by at least two-thirds of the total membership of the house.
- (d) a resolution passed by a majority of all the members of the house.

116. If a Money Bill passed by the Lok Sabha is not returned by the Rajya Sabha within 14 days, then

- (a) Lok Sabha will reconsider it
- (b) Money Bill will be rejected
- (c) President will summon a joint meeting of both the Houses to discuss it
- (d) The bill will be sent to the President for his signature and consent

117. What is the provision to safeguard the autonomy of the Supreme Court of India?

1. While appointing the Supreme Court Judges, the President of India has to consult the Chief Justice of India.
2. The Supreme Court Judges can be removed by the Chief Justice of India only.
3. The salaries of the judges are charged on the Consolidated Fund of India to which the legislature does not have to vote.
4. All appointments of officers and staffs of the Supreme Court of India are made by the government only after consulting the Chief Justice of India.

Which of the statements given above is/are correct?

- (a) 1 and 3  
(b) 3 and 4  
(c) Only 4  
(d) 1, 2, 3 and 4

- 112- fuEu dFkuka ij fopkj dja%  
Hkkjr; I fo/kku dsvarxr ekfyd vf/kdkj bl fy,  
ekfyd gS D; kd%  
1. os I fo/kku }kjk I jf{kr gS, oaykxwfd, tkrsgA  
2. os I fo/kku }kjk fu; r njhds I s gh fuyacr  
fd; s tk I drsgA  
3. os jkT; ds fo: } ykxw djus; kx; gA  
4. os I rkk/kr ughafd; s tk I drA  
mi; Dr dFkuka ea I s dks I s I gh gA  
(a) 1 rFkk 4 (b) 2 rFkk 3  
(c) 1] 3 rFkk 4 (d) 1] 2 rFkk 3

- 113- fuEufyf[kr ea I s dks I s dRrD; ukxfjdka ds fy,  
fu; r gS  
1. oKkfud : >ku c<kukA  
2. I kekf'td I l—fr dh I e) /kjsj dh I g{kk  
djuka  
3. xte i pk; rka dk xBu djuka  
4. vkenuh dh vl ekurkva dks ?kVukA  
5. I eku ukxfjd I agrk dks /kj .k djuka  
6. ns'k dh j{kk djuka  
uhpsfn; sx; s dw dk c; ; sx dj I gh mRrj pfu; %

**dw%**

- (a) 1, 3 rFkk 4 (b) 3, 4 rFkk 5  
(c) 1, 2 rFkk 6 (d) 2, 5 rFkk 6

- 114- fuEu ea I s dks I s vf/kdkj Hkkjr ds jk'Vfr dks  
mlkyC/k gS i jUrjkt; ds jkT; i ky dks ughA  
1. eR; q. M dks {kek djus dh "kfDrA  
2. dwuhfrd "kfDr; kA  
3. jkT; fo/kku I Hkk }kjk ikfjr v/; kns'ka dks  
jkslus dh "kfDrA  
4. vki krdky ykxw djus dh "kfDrA  
uhpsfn; sx; s dw dk c; ; sx dj I gh mRrj pfu; %

**dw%**

- (a) 1 rFkk 4 (b) 2 rFkk 3  
(c) 1] 2 rFkk 3 (d) 1] 2 rFkk 4

- 115- ykd I Hkk v/; {k dks vius in I sgVk; k tk I drk  
gS  
(a) I nu eacger ny }kjk vfo"okl iLrko ikfjr  
djda  
(b) I nu dh dgy I nL; ka ds vk/ks I svf/kd I nL; ka  
}kjk ikfjr iLrko }kjkA  
(c) I nu dh dgy I nL; rk ds nks frgkbZ I nL; ka  
}kjk ikfjr iLrko }kjkA  
(d) I nu ds I Hkh I nL; ka ds cger }kjk ikfjr  
iLrko }kjkA

- 116- ;fn ykd I Hkk }kjk ikfjr , d /ku fo/ks d] jkT;  
I Hkk dks 14 fnuladsvlhj ughaoki I fd; k tkrk gS r%  
(a) ykd I Hkk ml ij i fopkj djsxh  
(b) foRr fo/ks d jna gk tk; sx  
(c) jk'Vfr ml ij ppkZ ds fy; s nksuka I nuka dh  
I a Dr cBd cgyk; ks  
(d) fo/ks d jk'Vfr dks gLrk{kj , oa I gefr ds  
fy; s Hkst fn; k tk; sx

- 117- Hkkjr ds I okP U; k; ky; dh Lok; Rrk dh I g{kk ds  
fy, D; k cko/kku gS

1. I okP; U; k; ky; ds U; k; k/kh"ka dh fu; Dr  
djsr I e; ] Hkkjr ds jk'Vfr dks Hkkjr ds e[;  
U; k; k/kh"k I s fopkj &foe"lz djuk gkrk gA  
2. I okP U; k; ky; ds U; k; k/kh"ka dks dgy Hkkjr  
ds e[; U; k; k/kh"k gh gVk I drsgA  
3. U; k; k/kh"ka dk oru Hkkjr dh I apr fuf/k I s  
fuxr fd; k tkrk gS ftl ds fy, fo/kkf; dk dks  
ernku ugha djuk gkrkA  
4. Hkkjr ds I okP U; k; ky; ds I Hkh vf/kdkfj; ka  
, oa depkfj; ka dh fu; Dr I jdkj }kjk Hkkjr  
ds e[; U; k; k/kh"k I s fopkj foe"lz djds gh  
gkrh gA

fuEufyf[kr ea I s dks I s dFku I gh gS gA \

- (a) 1 rFkk 3  
(b) 3 rFkk 4  
(c) dgy 4  
(d) 1] 2] 3 rFkk 4

118. Which one of the following taxes is levied and collected by the Union but distributed between Union and States?
- (a) Corporation tax  
(b) Tax on income other than on agricultural income  
(c) Tax on railway fares and freights  
(d) Customs
119. A person stood alone in a desert on a dark night and wanted to reach his village, which was situated 5 km East of the point where he was standing. He had no instruments to find the direction, but he located the polestar. The most convenient way now to reach his village is to walk in the:
- (a) direction facing the polestar  
(b) direction opposite to the polestar  
(c) direction keeping the polestar to his left  
(d) direction keeping the polestar to his right
120. We always see the same face of the Moon, because:
- (a) it is smaller than the Earth.  
(b) it revolves on its axis in a direction opposite to that of the Earth.  
(c) it takes equal time for revolution around the Earth and rotation on its own axis.  
(d) it rotates at the same speed as the Earth around the Sun.
121. 21<sup>st</sup> June is the longest day of the year for those living in the Northern Hemisphere. What is the shortest day of the year for those living in the Southern Hemisphere?
- (a) 21<sup>st</sup> March                      (b) 21<sup>st</sup> September  
(c) 21<sup>st</sup> December                (d) 21<sup>st</sup> June
122. In the structure of planet earth, below the mantle, the core is mainly made up of which one of the following?
- (a) Aluminum                      (b) Chromium  
(c) Iron                                (d) Silicon
123. Which one of the following statements is correct with reference to our Solar system?
- (a) The Earth is the densest of all the planets in our Solar System.  
(b) The predominant element in the composition of Earth is silicon.  
(c) The Sun contains 75% of the mass of the Solar System.  
(d) The diameter of the Sun is 190 times that of the Earth.
124. Consider the following statements:
1. Total land area of Earth is approximately 1475 lakh square kilometers.
  2. Ratio of land area to water area of Earth is approximately 1 : 4.
  3. Maximum percentage of Earth's water is in the Pacific Ocean.
- Which of the statement/(s) given above is/are correct?
- (a) 1 and 3                              (b) 2 and 3  
(c) Only 1                                (d) Only 3
125. **Statement I:** The annual range of temperature is less in the equatorial region as compared to the sub-tropical or temperate region.  
**Statement II:** In the equatorial region, the rainfall occurs all round the year.
- Codes:**
- (a) Both the Statements are individually true and Statement II is the correct explanation of Statement I  
(b) Both the Statements are individually true but Statement II is *not* the correct explanation of Statement I  
(c) Statement I is true but Statement II is false  
(d) Statement I is false but Statement II is true
126. Which of the following is not a consequence of El Niño?
- (a) Drought in India  
(b) Heavy rainfall in Chile  
(c) Killing of large number of fishes across Peruvian coast  
(d) Floods in Australia

118- fuEu ea l s dks l k dj dlnz }kjk yxk; k rFkk , df=r fd; k tkrk gSi jUrqdbnz rFkk jkT; nksuka ea forfjr gsrk gS

(a) fuxe dj  
 (b) -f'k vlenuh ds vykok vl; vlenuh ij dj  
 (c) j sy HkMk rFkk ekyHkM+ ij dj  
 (d) l hek "kyd

119- , d 0; fDr jfXlrku ea vdkjh jkr ea vdsys [kMk Fkk vksj viusxkp tkuk pkrk Fkk] tksogk l s fdeh- i wZ dh vksj fLFkr Fkk ml ds ikl fn"kk csk ds fy, dkbZmi dj .k ugha Fkk ijUrqmI us/kp rkjk nsk fy; kA ml ds fy; s vius xkp igpus dk l cl s vkl ku jkLrk gS pyrsjguk%

(a) /kp rkjsh dh fn"kk ea  
 (b) /kp rkjsh foijhr fn"kk ea  
 (c) ml fn"kk ea tc /kp rkjk ml ds ck; h vksj gks  
 (d) ml fn"kk ea tc /kp rkjk ml ds nk; ha vksj gks

120- ge ges'kk plnek dh ogh l rg nskrs gD; kfd%  
 (a) og iFoh l s Nks/k gS  
 (b) og iFoh ds foijhr fn"kk ea viuh /kjh ij ?kerk gS  
 (c) og iFoh ds pkjka vksj ?kous rFkk viuh /kjh ij ?kouse acjkj l e; yrk gS  
 (d) ml ds ifjOe.k dh xfr mruh gh gSftruh dh iFoh ds }kjk l wZ ds pkjka vksj ?kous dh xfrA

121- mRrjh xksy/kZ ea jgus okyka ds fy, 21 tu o'kZ dk l cl syEck fnu gsrk gS nf{k.kh xksy/kZ ea jgus okyka ds fy, o'kZ dk l cl s Nks/k fnu dks l k gsrk gS

(a) 21 ekpZ  
 (b) 21 fl rEcj  
 (c) 21 fnl Ecj  
 (d) 21 tu

122- iFoh xg dh l jpkuk ea eMy ds uhps fLFkr dksj] e[; r%fd l , d rRo l scuk gsrk gS

(a) , Y; fiefu; e  
 (b) Økfe; e  
 (c) yksgk  
 (d) fl fydku

123- gekjs l kjeMy ds l mHkZ ea fuEu ea l s dks l k dFku l R; gS

(a) l kjeMy ds l Hkh xgka ea iFoh dk ?kuRo l okZ/kd gS  
 (b) iFoh dh l jpkuk ea iedk rRo fl fydku gS  
 (c) ijs l kjeMy dk 75% nD; eku l wZ ea gS  
 (d) l wZ dk 0; kl ] iFoh ds 0; kl dk 190 xpk gS

124- fuEufyf[kr dFkuka ij fopkj dja%

1. iFoh dh dgy HkMkx yxHkx 1475 yk[k oxZ fdykehVj gS  
 2. iFoh ds Hkfe {ks=Oy rFkk ty {ks=Oy dk vuqkr yxHkx 1 : 4 gS  
 3. iFoh ds ty dk vf/kdre ifr"kr] i'kkar egkl kxj ea gS

uhpsfn; s x; s dks l k@l s dFku l gh g@gS

(a) 1 rFkk 3  
 (b) 2 rFkk 3  
 (c) dgy 1  
 (d) dgy 3

125- dFku I: Hke/; orhZ {ks= ea rki eku dh ok'kd jat] "khrks.k rFkk mi m'.kdfVcdkh; {ks= dh vi{kk de gsrh gS

dFku II: Hke/; orhZ {ks= ea ijs o'kZ o'kZ gsrh jgrh gS

**dw%**

(a) nksuka dFku vyx&vyx l R; gS vksj dFku II, dFku I dk l gh Li 'Vhdj .k gS  
 (b) nksuka dFku vyx&vyx l R; gS fdUr dFku II, dFku I dk l gh Li 'Vhdj .k ugha gS  
 (c) dFku I l R; gS fdUr dFku II vl R; gS  
 (d) dFku I vl R; gS fdUr dFku II l R; gS

126- fuEu ea l s dks , yuhuks ds ifj .kke Lo: i ugha gS

(a) Hkjr ea l v[kk  
 (b) fpyh ea Hkjh o'kZ  
 (c) is ds rV ij cgr vf/kd l [; k ea enfy; ks dk ejuk  
 (d) vLVfy; k ea ck<+

127. Which one of the following state has the longest coastline?

- (a) Maharashtra (b) Tamil Nadu  
(c) Gujarat (d) Andhra Pradesh

128. Through which one among the following groups of states does the river Narmada flow?

- (a) Gujarat and Madhya Pradesh  
(b) Gujarat, Madhya Pradesh and Maharashtra  
(c) Gujarat, Madhya Pradesh and Uttar Pradesh  
(d) Gujarat, Rajasthan and Uttar Pradesh

129. Which one of the following four periods corresponds to the withdrawal of South-West monsoon in most of the Northern India?

- (a) June to September (b) October to November  
(c) December to March (d) April to May

130. Match **List I** with **List II** and select the correct answer using the codes given below the columns.

<b>List I</b>	<b>List II</b>
<b>(Tiger Reserve)</b>	<b>(State)</b>
A. Malghat	1. Karnataka
B. Dapha	2. West Bengal
C. Buxa	3. Mizoram
D. Bandipur	4. Maharashtra

**Codes:**

	<b>A</b>	<b>B</b>	<b>C</b>	<b>D</b>
(a)	4	3	2	1
(b)	4	2	3	1
(c)	2	4	1	3
(d)	3	1	4	2

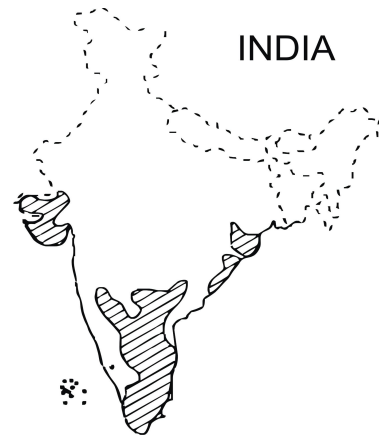
131. Which one of the following is not a lagoon?

- (a) Ashtamudi Lake (b) Chilka Lake  
(c) Periyar lake (d) Pulicat lake

132. When you travel in certain parts of India, you will notice red soil, what is the main reason for this colour?

- (a) Abundance of magnesium  
(b) Accumulated humus  
(c) Presence of ferric oxide  
(d) Abundance of phosphate

133. The shaded areas in the given map show the main areas of concentration for the cultivation of



- (a) Cotton (b) Groundnut  
(c) Millets (d) Maize

134. With reference to the mineral sources of India, consider the following pairs:

1. Copper : Jharkhand  
2. Nickel : Odisha  
3. Tungsten : Kerala

Which of the pairs given above is/are correctly matched?

**Code:**

- (a) 1 and 2 (b) Only 2  
(c) 1 and 3 (d) 1, 2 and 3

135. Consider the following statements:

1. Balaghat is known for its diamond mines.  
2. Majhgawan is known for its manganese deposit.

Which of the statements given above is/are correct?

**Code:**

- (a) Only 1 (b) Only 2  
(c) Both 1 and 2 (d) Neither 1 nor 2

136. Among the following cities, which one is nearest to the Tropic of Cancer?

- (a) Delhi (b) Kolkata  
(c) Jodhpur (d) Nagpur

127- fuEu ea l sfdl jkT; dh rVorhZj\$kk l cl syEch g\$

- (a) egjk'V<sup>a</sup> (b) rfeyukMq
- (c) xqtjkr (d) vku/kz çns'k

128- uehk unh fuEufyf[kr ea l sfdl jkT; ka l sxqtjrh g\$

- (a) xqtjkr rFkk e/; ins'k
- (b) xqtjkr] e/; ins'k rFkk egjk'V<sup>a</sup>
- (c) xqtjkr] e/; ins'k rFkk mRrj ins'k
- (d) xqtjkr] jktLFkku rFkk mRrj ins'k

129- fuEufyf[kr pkj dkyØeka ea l s dks&l k nf{k.k&if"pe ekul u ds mRrj Hkkjr l sgVus dk l e; g\$

- (a) tw l sfl rEcj (b) vDVw; l suoEcj
- (c) fnl Ecj l sekpl (d) vi\$y l sebl

130- I ph I dks I p II ds l kFk l øfyr djarFkk uhp\$ fn; sx; sdw/ka d k ç; kx l sl gh mRrj dk p; u dj\$

- |                         |                        |
|-------------------------|------------------------|
| <b>I p<h>h I</h></b>    | <b>I p<h>h II</h></b>  |
| <b>½ck?k vH; kj .k½</b> | <b>½jkt; ½</b>         |
| A. eky?kV               | 1. duw/d               |
| B. MkQk                 | 2. if"pe cak           |
| C. cDI k                | 3. fetkje              |
| D. cknhi g              | 4. egjk'V <sup>a</sup> |

dw%

	<b>A</b>	<b>B</b>	<b>C</b>	<b>D</b>
(a)	4	3	2	1
(b)	4	2	3	1
(c)	2	4	1	3
(d)	3	1	4	2

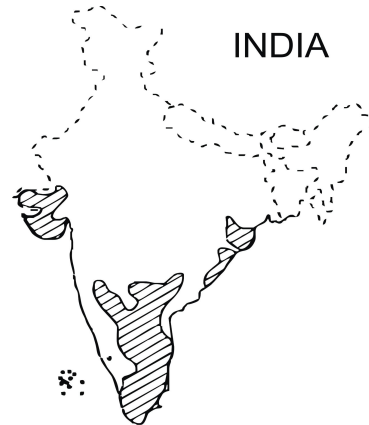
131- fuEufyf[kr ea l s dks , d y\$w ugha g\$

- (a) v'VeVh >hy (b) fpYdk >hy
- (c) i\$; kj >hy (d) ifydV >hy

132- tc vki Hkkjr ds dQ fgLI ka ea ; k=k djrs g\$ rks vki yky feVVh n\$krsg\$ bl jax dk e\$; dkj.k D; k g\$

- (a) e\$uhf" k; e dh cgyrk
- (b) , df=r [kn feVVh
- (c) Q\$jd vkDI kbM dh mi fLFkr
- (d) QkLQV dh cgyrk

133- fn, x; sekup= ds Nk; kdr {k= ea e\$; r%D; k mxk; k tkrk g\$



- (a) dikl (b) epkQyh
- (c) cktjk (d) eDdk

134- Hkkjr ds [kfut l k\$ka ds l mHkZ eafuEufyf[kr tkM/ka dks n\$ [k, %

- 1. dkWj % >kj [k.M
- 2. fudy % mfMI k
- 3. V\$LVu % djy

mijdr tkM/ka ea l s dks l k@l s l gh l øfyr g\$g\$

dw%

- (a) 1 rFkk 2 (b) d\$y 2
- (c) 1 rFkk 3 (d) 1] 2 rFkk 3

135- fuEufyf[kr dFkuka ij fopkj dhft, %

- 1. ckyk?kV ghjs dh [kkuka dsfy, tkuk tkrk g\$
  - 2. e>xkø e\$uht HkMkj dsfy, tkuk tkrk g\$
- mijdr ea l s dks l k@l s dFku l gh g\$g\$

dw%

- (a) d\$y 1 (b) d\$y 2
- (c) 1 rFkk 2 n\$ka (d) u rks 1 u gh 2

136- fuEufyf[kr "kjka ea l s dks ddZ j\$kk ds l cl s fudV g\$

- (a) fnYyh (b) dkydrk
- (c) t\$ki g (d) ukxi g

137. Match **List I** with **List II** select the correct answer using the codes given below the Lists:

<b>List I</b>				<b>List II</b>			
<b>(Industry)</b>				<b>(Place)</b>			
A.	Lac			1.	Jhalda		
B.	Mineral			2.	Ranchi		
C.	Heavy Engineering			3.	Kadi		
D.	Railway			4.	Paramour		
				5.	Varanasi		

	<b>A</b>	<b>B</b>	<b>C</b>	<b>D</b>		<b>A</b>	<b>B</b>	<b>C</b>	<b>D</b>
(a)	1	3	2	5	(b)	4	3	1	2
(c)	2	4	3	5	(d)	1	4	2	3

138. Which one of the following pairs of States are connected by the National Highway No. 4?

- (a) Tamil Nadu and Uttar Pradesh
- (b) Andhra Pradesh and Uttar Pradesh
- (c) Andhra Pradesh and West Bengal
- (d) Tamil Nadu and Maharashtra

139. Man can maintain an ecological balance in the biosphere by

- (a) deforestation
- (b) developing new breeds of cultivated plants and domesticated animals
- (c) using insecticides and pesticides
- (d) understanding the delicate balance in the relative number of organisms

140. Consider the following railway zones:

1. North-Eastern Railway
2. Central Railway
3. North-Western Railway
4. South-Eastern Railway

Which one of the following is the correct order of locations of the headquarters of the above railway zones from west to east?

- (a) 1-2-3-4
- (b) 2-3-1-4
- (c) 3-2-4-1
- (d) 3-4-2-1

141. Fiscal policy in India is formulated by the:

- (a) NITI Aayog
- (b) Finance Ministry
- (c) Reserve Bank of India
- (d) Securities and Exchange Board of India

142. Which country's expertise in urban planning will be utilized in the Urban Management Programme that was launched by NITI Aayog in April, 2016 to build the capacities of State Government and urban local bodies?

- (a) Germany
- (b) Italy
- (c) Malaysia
- (d) Singapore

143. Which of the following is not the part of One Rank One Pension (OROP) that received approval of the Union Cabinet for its implementation?

- (a) The Pension will be allotted from 5 Aug, 2016
- (b) The pension will be redetermined after 10 years.
- (c) The pension benefit will be extended to family.
- (d) Arrears will be paid in four-six yearly installments.

144. The Indian Army conducted battle exercise named as 'Shatrujeet' in which state near to the border with Pakistan?

- (a) Punjab
- (b) Rajasthan
- (c) Jammu & Kashmir
- (d) None of these

145. International Olympic Committee denied wild card entry to which boxer in Rio Olympics?

- (a) George Foreman
- (b) MC Mary Kom
- (c) Narsingh Yadav
- (d) Danny Garcia

146. Consider the following statements:

1. BrahMos is a supersonic cruise missile that can be launched from submarines, ships, aircraft or land.
2. It is the world's second fastest anti-ship cruise missile.

Which of the above statements is/are true?

- (a) Only 1
- (b) Only 2
- (c) Both 1 and 2
- (d) None of these

147. Which of the following is not correctly matched?

- (a) Air Force Academy : Hyderabad
- (b) College of Military Engineering : Pune
- (c) Institute of Armament Technology : Pune
- (d) Naval College of Engineering : Kochi



137- I p h I v k j I p h II d k s f e y k u d f j ; s v k j u h p s f n , x , d w I s l g h m R r j p f u , %

- |                                  |                        |
|----------------------------------|------------------------|
| <b>I p h I</b>                   | <b>I p h II</b>        |
| <b>1/4 n   k s x 1/2</b>         | <b>1/4 F k k u 1/2</b> |
| A. y k [ k                       | 1. > k y n k           |
| B. [ k f u t                     | 2. j k p h             |
| C. H k k j h v f h k ; k a = d h | 3. d k n h             |
| D. j s y o s                     | 4. i k j k e k j       |
|                                  | 5. o k j k . k l h     |
- |                |                |
|----------------|----------------|
| <b>A B C D</b> | <b>A B C D</b> |
| (a) 1 3 2 5    | (b) 4 3 1 2    |
| (c) 2 4 3 5    | (d) 1 4 2 3    |

138- f u E u f y f [ k r e a l s d k u l s j k T ; k a d k t k M k j k ' V h ; j k t e k x z l a ; k 4 l s t M f k g s  
 (a) r f e y u k M q r F k k m R r j i n s ' k  
 (b) v k k z i n s ' k r F k k m R r j i n s ' k  
 (c) v k k z i n s ' k r F k k i f " p e c a k y  
 (d) r f e y u k M q r F k k e g k j k ' V a

139- e u t ; ] t b e M y e a i ; k b j . k h ; l a r y u ] c u k , j [ k l d r k g %  
 (a) t a y k a d s d v k u } k j k  
 (b) m i t k A i k s k k a r F k k i k y r w i " k a / k a d h u b z f d l e a f o d f l r d j  
 (c) d h v u k " k d k a r F k k [ k j i r o k j u k " k d k a d s i z ; k s x l s  
 (d) t h o k a d h l k i s { k d l a ; k d s u k t p l l a r y u d k s l e > d j

140- f u E u f y f [ k r j s y o s t k s u k a i j f o p k j d j %  
 1. m R r j & i m z j s y o s  
 2. e / ; j s y o s  
 3. m R r j & i f " p e j s y o s  
 4. n f { k . k & i m z j s y o s  
 f u E u f y f [ k r e a l s d k u l k , d ] m i ; p r j s y o s t k s u k a d k i f " p e l s i m z d h v k j e q ; k y ; v o l F k k u k a d k l g h v u p e g s  
 (a) 1-2-3-4 (b) 2-3-1-4  
 (c) 3-2-4-1 (d) 3-4-2-1

141- H k k j r e a j k t d k s k h ; u h r d k f u / k k j . k f d l d s } k j k f d ; k t k r k g s  
 (a) u h r v k ; k s x  
 (b) f o Y k e a = k y ;  
 (c) H k k j r h ; f j t o z c d l  
 (d) H k k j r h ; c f r H k k i r , o a f o f u e ; c k M Z

142. j k T ; l j d k j r F k k L F k k u h ; f u d k ; k a d h { k e r k d k f o d k l d j u s g r j u h r v k ; k s x } k j k v c s y ] 2 0 1 6 e a " k q f d ; s x ; s " k g j h c c z k u d k ; D e g r q f d l n s ' k d h " k g j h f u ; k s t u f o " k s k K r k d k m i ; k s x f d ; k t k ; s k \

- (a) t e z h (b) b v y h  
 (c) e y s " k ; k (d) f l a k i j

143- o u j d l o u i a k u 1/4 v k s v k j - v k s i h 1/2 f t l d s f o ; k l o ; u d s f y , d b n h ; e f i = e M y d h l g e f r f e y x ; h g s f u E u f y f [ k r e a l s d k u l k b l d k f g l l k u g h a g s

- (a) i a k u 5 v x l r ] 2 0 1 6 l s n h t k , x h A  
 (b) i a k u 1 0 o ' k k a d s c k n f u / k k z j r g k s x h A  
 (c) i a k u d k Y k k k i f j o k j d k s H k h f n ; k t k , x k A  
 (d) c d k ; k j k f " k d k H k q r k u p k j & n % o ' k k a e a f d " r k a e a f d ; k t k ; s k A

144- H k k j r h ; l s u k u s ; p H ; k l " k = q t h r " i k f d l r k u d s l h e k d s l e h i f d l j k T ; e a l p k f y r f d ; k  
 (a) i a t k c (b) j k t L F k k u  
 (c) t e w o d " e h j (d) b u e a l s d k b z u g h a

145- v a r j k ' V h ; v k s y f e i d d e v h u s f d l e p d s k t d k s f j ; k s v k s y f e i d e a o k b y M d k M Z i d s ' k u g h a f n ; k \

146- f u E u f y f [ k r d F k u k a i j f o p k j d h f t , %  
 1. c g e k l l i j l k f u d o n t f e l k b y g s f t l s i u M q h i k r ] o k ; q k u r F k k F k y l s i z k s i r f d ; k t k l d r k g a  
 2. ; g f o " o d k n h j k l c l s r s t , a / h " k i o n t f e l k b y g a  
 f u E u f y f [ k r e a l s d k u l k @ l s d F k u l g h g s @ g a  
 (a) d o y 1 (b) d o y 2  
 (c) 1 r F k k 2 n k s u k a (d) b u e a l s d k b z u g h a

147- f u E u e a l s d k u l e f s y r u g h a g s  
 (a) o k ; q s u k v d k n e h % g s h j k c k n  
 (b) f e f y V h v f h k ; k a = d h d k M y s t % i q k s  
 (c) " k l = h d j . k r d u h d l a F k k % i q k s  
 (d) u k s s u k v f h k ; k a = d h d k M y s t % d k s P p

148. Arrange the following in a correct chronological order according to their formation:

1. Indo-Tibetan Border Police
2. Border Security Guard
3. Assam Rifles
4. National Security Guard

Choose the correct answer from codes given below.

**Code:**

- (a) 3, 2, 1, 4                      (b) 3, 2, 4, 1  
 (c) 3, 1, 2, 4                      (d) 3, 1, 4, 2

149. Consider the following statements:

1. The Integrated Guided Missile Development Programme was launched in 1983.
2. The National Cadet Corps (NCC) established in 1948.
3. The Territorial Army is a voluntary part time Civilian Army.
4. The Indian Coast Guard came into existence in 1978.

Which of the statements given above is/are not correct?

- (a) 1, 2, 3 and 4                      (b) 1, 2 and 4  
 (c) Only 3                                (d) Only 4

150. Match **List I** with **List II** and select the correct answer using the code given below the Lists:

**List I**  
**(Warhead)**

- A. Tejas  
 B. Arjun  
 C. Dhanus  
 D. Astra

**List II**  
**(Type)**

1. Air-to-air missile  
 2. Ship-based missile  
 3. Main battle tank  
 4. Light combat aircraft

**Code:**

- | A     | B | C | D | A     | B | C | D |
|-------|---|---|---|-------|---|---|---|
| (a) 4 | 3 | 2 | 1 | (b) 1 | 2 | 3 | 4 |
| (c) 4 | 2 | 3 | 1 | (d) 1 | 3 | 2 | 4 |

148- fuEufyf[kr dksbudxsbu dsvud kj l gh dkyØe  
ea0; ofLFkr dhft , %  
1. Hkkjrh; &frçcr l hek i fyi  
2. l hek l j {kk xkMZ  
3. vl e jkbQy  
4. jk'Vh; l j {kk xkMZ  
uhpsfn, dWka ea l s l gh mRrj pfu, %

**dw%**

- (a) 3, 2, 1, 4                      (b) 3, 2, 4, 1  
(c) 3, 1, 2, 4                      (d) 3, 1, 4, 2

149- fuEufyf[kr dFkuka ij fopkj dhft , %  
1. , dh—r funf"kr fel kby fodkl dk; Øe] 1983  
ea "kq gqkA  
2. jk'Vh; dM/M d kj 1/2 k-dsdks½ dh LFkki uk 1948  
ea gPÅ  
3. i knf"kd l suk , d Los{k kd v{kdkfyd ukxfjd  
l suk gÅ  
4. Hkkjrh; rV j {kd 1978 ea vflrRo ea vkbÅ  
fuEu ea l s dks l k@l s dFku l gh ugha g@gÅ  
(a) 1, 2, 3 rFkk 4                      (b) 1, 2 rFkk 4  
(c) dõy 3                                  (d) dõy 4

150. I ph I dks I ph II ds l kFk l efyr dja vks  
l fip; ka ds uhps fn; s x; s dW dk ç; ksx dj l gh  
mRrj pfu; %

**I ph I  
(oklgM)**

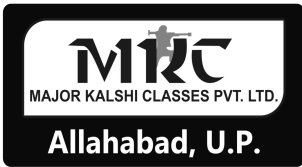
- A. rst l ~  
B. vtü  
C. /kudk  
D. vl=

**I ph II  
(çdkj)**

1. ok; &l &ok; q fel kby  
2. ty; ku&vk/kfjr fel kby  
3. eç; ; Ø d Vd  
4. gYdk ; Ø d foeku

**dw%**

- |     | A | B | C | D |     | A | B | C | D |
|-----|---|---|---|---|-----|---|---|---|---|
| (a) | 4 | 3 | 2 | 1 | (b) | 1 | 2 | 3 | 4 |
| (c) | 4 | 2 | 3 | 1 | (d) | 1 | 3 | 2 | 4 |



# MAJOR KALSHI CLASSES PVT. LTD.

“A way to get commissioned”

## NDA/NA MOCK TEST

### I keU; ;kX; rk ijh{k.k

### ijh{k.k i qLrdk

I e; % nks ?k. Vs vlg rhl feuV

i wkkd % 600

#### vuqsk

- 1- ijh{k.k i kjEHk gksusdsrjUr ckn] vki bl ijh{k.k i qLrdk dh iMfky vo”; dj yafd bl eadkbZfcuk Ni k] QV k ; k NWk gqk i B vFkok iz'ukad vkfn u gkA ; fn , d k gS rksbl sl gh ijh{k.k i qLrdk l scny yhfT, A
- 2- —; k/; ku j[ lefd OMR mYkj&i=d ej mfr LFku ij] jky uEj vlg ijh{k.k i qLrdk vuDe A, B, C ; k D dk /; ku l s, oafcu fdl h pd ; k fol xfr dshkjusvlg dWc) djusdh fEenkh mEhnokj dh gA fdl h Hkh i d k j dh pd@fol xfr dh fLFkr eamYkj&i=d fujLr dj fn; k tk; xkA
- 3- bl ijh{k.k i qLrdk ij l kFk eafn, x, dksBd eavki dksvi uk vuDekd fy [kuk  gA ijh{k.k i qLrdk ij vlg dN u fy [kA
- 4- bl ijh{k.k i qLrdk eady 150 iz'ukak 1/4 iz'u nksHkxka eafn; sx; sgHkx&A vlg Hkx&BA Hkx&B ea iR; d iz'ukak fgluh vlg vaxsh nksuka ea Nik gA iR; d iz'ukad eapkj iR; Ykj YmYkj 1/2 fn, x, gA bueal s, d iR; Ykj dksppu y ftlsvki mYkj&i=d ij vidr djuk pkrsgA ; fn vki dks, d k yxsf, d l svf/kd iR; Ykj l gh gS rksml iR; Ykj dksvidr dja tksvki dksl okke yxA iR; d iz'ukad ds fy, d gh iR; Ykj ppuuk gA
- 5- vki dksvi us l Hkh iR; Rj vyx l sfn, x, mRj&i=d ij gh vidr djusgA mRj&i=d eafn, x, funk ns [k, A
- 6- l Hkh iz'ukak dsvd l eku gA
- 7- bl l sigysf vki ijh{k.k i qLrdk dsfoHku iz'ukak dsiR; Rj mRj&i=d ij vidr djuk “kq djh vki dks i Dsk i ek. k&i= ds l kFk i f'kr vuqsk dsvd kj dN foj. k mRj&i=d eansusgA
- 8- vki vi us l Hkh iR; Rjka dks mRj&i=d eaHkjusdsckn rFk ijh{k.k dsl eki u ij dgy mRj&i=d v/hkd dksl ka na vki dksvi us l kFk ijh{k.k i qLrdk ys tkusdh vufr gA
- 9- dPpsdke dsfy, i=d ijh{k.k i qLrdk dsvUr ea l yXu gA
- 10- **xyr mRjka dsfy, n.M %**  
**oLru' B iz'u&i=ka eamEhnokj }kjk fn, x, xyr mYkjka dsfy, n.M fn; k tk, xkA**
  - (i) iR; d iz'u dsfy, pj obfYir mRj gA mEhnokj }kjk iR; d iz'u dsfy, fn, x, , d xyr mRj dsfy, iz'u graqfu; r fd, x, vdkadk , d&frgkbn.M ds: i eadkVk tk, xkA
  - (ii) ; fn dkbZ mEhnokj , d l svf/kd mRj nrk gS rksbl s **xyr mYkj** ekuk tk, xk] ; | fi fn, x, mYjka ea l s, d mYkj l gh gsrk gS fQj Hkh ml iz'u dsfy, mi; Prkuq kj gh ml h rjg dk n.M fn; k tk, xkA
  - (iii) ; fn mEhnokj }kjk dkbZ iz'u gy ughafd; k tkrk gS vFkr-mEhnokj }kjk mYkj ughafn; k tkrk gS rksml & iz'u dsfy, **dkbn.M ughafn**; k tk, xkA

tc rd vki dksbl ijh{k.k i qLrdk [koyusdksu dgk tk,] rc rd u [kya

Note : English version of the instructions is printed on the front cover of this Booklet.